

Ogalala Lace Bracelet

By Jill Wiseman

© 2006. All Rights Reserved



Supply List

- 30-45 6mm firepolish beads
- 20 grams size 11 seed beads
- Fireline (6 lb test)
- Size 10 beading needle
- 100-300 3mm firepolish (optional)

Ogalala is the name of a division of the Sioux Native American People who resided in the Black Hills area of western South Dakota. Ogalala is also the name of their Siouan dialect. The Ogalala stitch is accredited to this tribe, and is sometimes called a Butterfly stitch or the Ogalala Butterfly stitch.

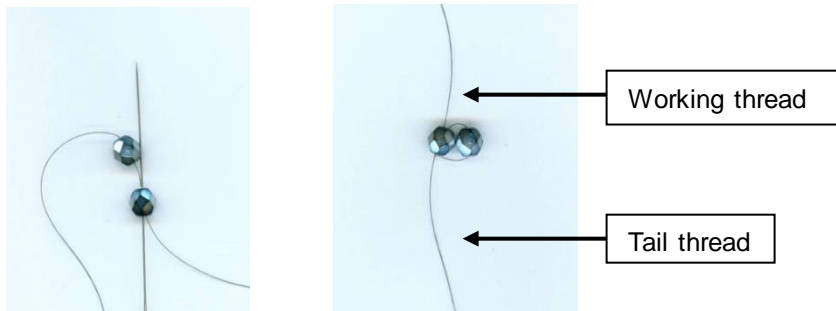
Something to look out for as you work – make sure your thread is not catching on any of the ruffles as you go along.

Instructions

1. Cut about two arm's length of Fireline and thread your needle. Fireline does not need to be stretched, nor does it need any conditioning with beeswax or Thread Heaven. You may need to run the end of the Fireline through your teeth to flatten it to get the needle to thread.

Note: I chose Fireline for this bracelet because it is waterproof, stronger, and because I think it gives the waves in the loops more body. But this bracelet certainly can be made with Nymo or any other similar beading thread if you prefer.

2. Put 2 firepolish beads on your thread (Fireline, but from here on I'll just be calling it thread), pull them down the thread so you have about a 6" tail left, and then needle through just the bottom firepolish bead from the bottom to the top. (For those who know ladder stitch already, that's what we're doing here.)

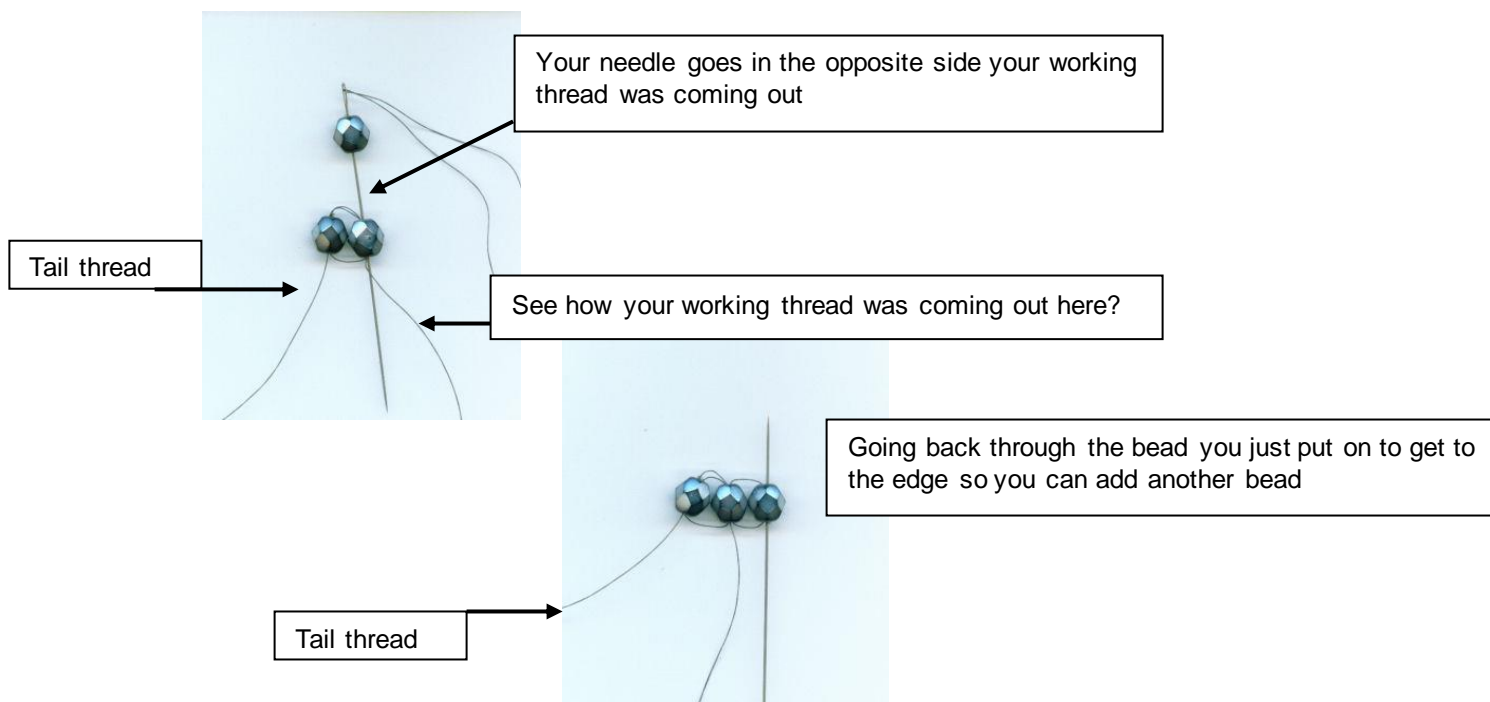


- 3.
4. Now you'll go through the bead on the right again.

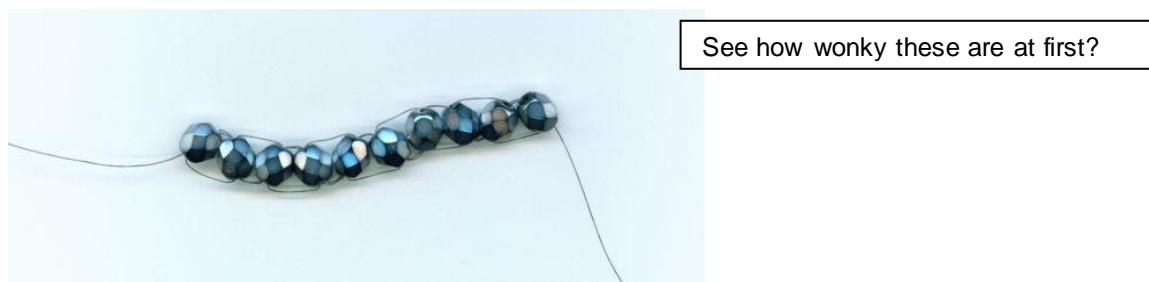


5. From here on, you'll be adding one bead at a time. The steps are this:
 - Pick up a bead on your needle
 - If your thread is coming out the top of the bead on your left, then you'll go through that bead from the bottom to the top to attach the bead on your needle to it. If your thread is coming out the bottom, then you'll go through the top of that bead. Just remember, you're going through the bead the opposite way your thread is coming out and you'll be okay.
 - Then you have to needle through the bead you just put on again so you can get all the way to the end of the bead group to add another bead.

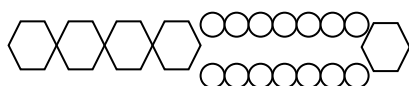
NOTE: It will all be very loosey-goosey at this point in the construction. Don't freak out! It's okay. We're going to be going back and forth through those firepolish beads about a million times and it will all tighten up.



6. Continue adding firepolish beads until your ladder is about 1 inch shorter than you want your finished bracelet to be.



7. Now we're going to pick up 7 seed beads, a firepolish bead, and 7 more seed beads. Anchor it all together with your ladder of firepolish just the way you've been doing – you'll simply have to go through all the seed beads too to do it. This is creating the opening for your toggle clasp. (See page 8 for a photo of the finished end for another view.)



8. Here's where we start tightening up the ladder. Weave up and down the beads just like you did in step 4, but without adding any beads. You're just circling around the beads in the ladder, and cinching them up more tightly.

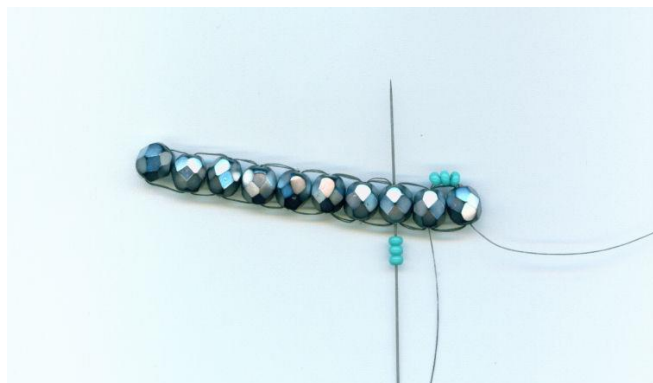


This is how they look after you tighten them up

9. Starting at one end of your bracelet (it doesn't matter which end, or what side of the bead you're coming out of) pick up 3 seed beads, and needle down the firepolish bead on the left.



10. Pick up 3 more seed beads, and needle through the next firepolish bead on the left. You will be creating a little "wave" of seed beads on every other firepolish bead intersection. Repeat until you're at the end of your bracelet. When you get to the end with the seed beads attaching the firepolish bead, don't add any more seed beads, but needle through them, the firepolish, and the other seed beads to turn the corner so you can do step 10.



11. Once you've finished the first pass, we're going to go back through the opposite direction (it's okay to turn your bracelet over so you're working the same direction every time) and filling in the seed bead waves in the intersections we skipped on the first pass.



- 12.
13. Guess what? That was so fun, let's do the whole thing again! You're going to do the exact same thing a second time, laying another row of seed bead waves next to the first ones. So you'll have to go down one length of your bracelet, then back again to get the waves in every intersection. They'll naturally lay next to the first set, so don't worry about trying to position them as you tighten.

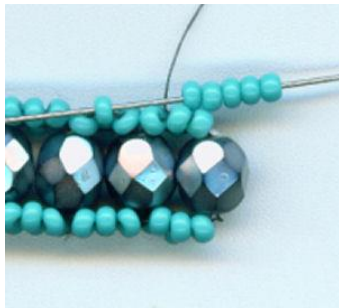


This is what it will look like from the top of the firepolish beads

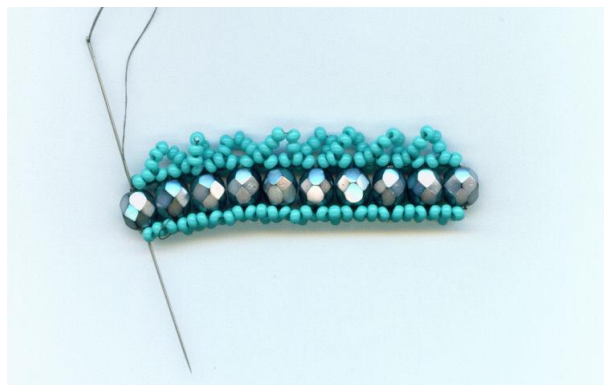
14. This time, when you get to that odd-ball firepolish end, I want you to pick up another set of 7 seed beads, go through the firepolish and pick up another 7 seed beads, so you have two sets of the 7 seed beads sitting next to each other.
15. We're going to leave the firepolish beads, and do most of our work in the seed beads from here on out. Needle through the first 2 seed beads in the first seed bead wave – it doesn't matter which side you pick. You are not adding any seed beads in this step – just getting your needle and thread in position to start adding.



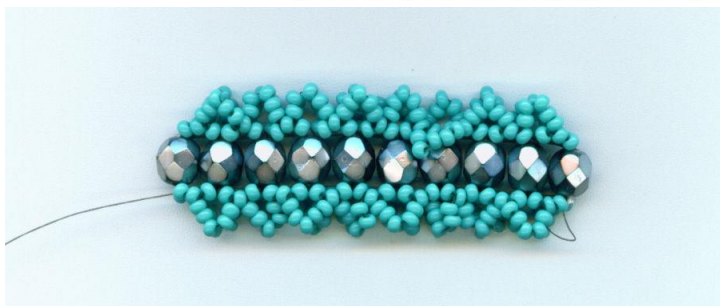
16. Pick up 5 seed beads, and needle through the center seed bead in the bead wave to the left – pick the same side that you came through on the first wave. This is where you can start adding 3mm firepolish accents if you like. What you would do is pick up 2 seed beads, a 3mm firepolish bead, and 2 more seed beads to create your wave of 5 beads instead of using all seed beads.



17. Continue step 12 along the entire edge of your bracelet, then needle through the last seed bead on the last wave, and the firepolish on the edge to get to the other edge of your bracelet. When you get to the funky end again, you're going to have to be a little creative, since there are 8 beads and not 9 for an even split of three. I usually go in the 4th, and the last beads, and when the bracelet is all finished you won't even notice the difference.



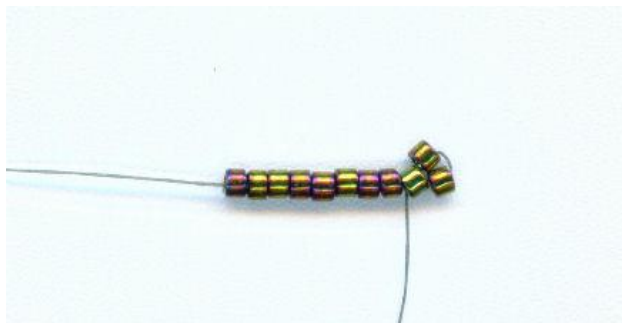
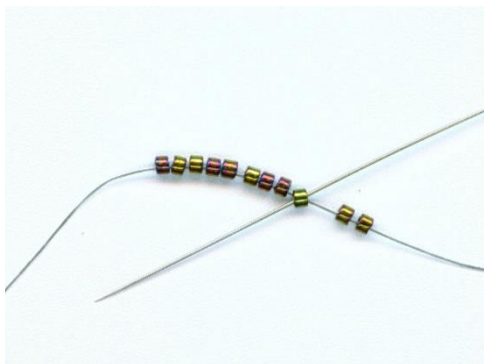
18. Needle through the first 2 seed beads in the first wave, and again, repeat step 12 along the full length of your bracelet.
19. Had fun? Good! Because now you're going to do the same thing on the second set of waves you made with 3 seed beads. Doing a double ruffle gives the bracelet a lot more body.



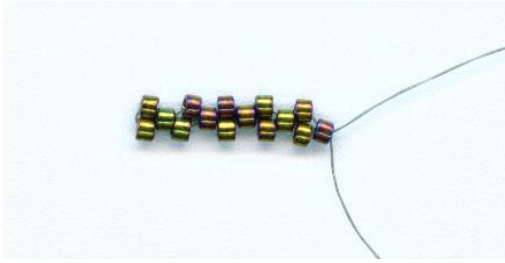
20. Once you've finished both sets of 5 seed bead waves, you'll be adding the last ruffle (or wave.) This time, you'll needle through the first 2 seed beads in the first wave, AND the first 3 seed beads in the second wave on top of it (the one you made by adding 5 seed beads.) You are not adding any seed beads in this step – just getting your needle and thread in position to start adding.
21. Now pick up 7 seed beads, and needle through the third (or middle if it helps you to think of it that way) seed bead in the next wave to the left. If you used 3mm firepolish beads for your middle bead in the waves of 5, then you'll be anchoring your waves of 7 through the 3mm firepolish from the previous step. And again, on this wave of 7, you can pick up 3 seed beads, a 3mm firepolish, and 3 seed beads to make your wave with extra flash and sparkle. You will continue picking up 7 seed beads and needling through the middle seed bead of the next wave for the entire length of your bracelet. Then, just like in steps 12-15, you'll do that same thing on both sides of your bracelet and through both sets of waves.
22. End your thread, and attach a new one so it's coming out one of the end firepolish beads.

NOTE: It's always best to put your clasp on with a new thread because the most likely place for a bracelet to break is at the clasp. If you've used a new thread to attach it, the rest of the bracelet won't fall apart too.

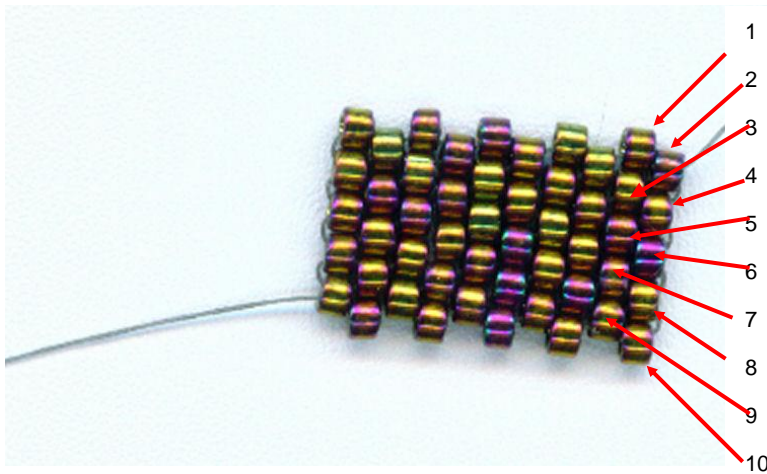
23. Now we're going to take a slight break from the bracelet and create the peyote tube that will be half of your clasp. Using a new thread and leaving six inches of tail, attach a stopper bead, then string on 11 size 11 seed beads. Going the opposite direction, pass through the third to the last bead. This will make the last two beads stack on top of each other, as illustrated below.



24. You will continue adding a bead, skipping a bead, and going through the next bead for the rest of the row.



25. Then you simply turn it over, and do the same thing going the opposite direction down the row. You fit a bead in the spaces between the beads, and go through the “up” bead to get to the next space. Continue until you’ve made 10 rows. The way to count rows is to count diagonally across the patch.



26. Once you’ve got your 10 rows done, fold the patch into a tube shape and you’ll see that the edges of each side will fit together like bricks. Use your needle to zip up these edges by zigzagging back and forth. End your thread and go back and end the starting thread also.
27. Now we’ll attach your peyote tube to the bracelet. Start a new thread, and come out one of the ending firepolish beads. Add 8 seed beads, then needle through two of the middle beads in the peyote tube, add another 2 seed beads, needle through the fourth seed bead from the tube, add 6 more seed beads, and then needle back through the opposite side of the end firepolish bead. End your thread. ke this:

Retrace your path at least one more time to reinforce the clasp, and do it two more times if you can get your needle through all the beads. The stronger you make your clasp, the stronger your whole bracelet will be.



The other end of your clasp will look like this.



And that's it! You're done! Your peyote tube toggle will fit through the space we created at the other end of your bracelet so your clasp is "hidden."

Variation possibilities

- Do only one set of waves per side
- Make a very simple bracelet by only doing the first wave of 3 seed beads
- Make a medium simple bracelet by only going as far as the second wave of 5 seed beads
- Vary the colors of your waves
- Mix colors together and make a random color waves version
- Try using 8mm firepolish and size 8 seed beads for a bigger version

If you have any questions while you're working, please feel free to email me at jill@jillwisemandesigns.com. Visit our website at www.jillwisemandesigns.com for kits, patterns (many free), beads, and all your beading supplies.

I invite you to explore my YouTube channel at <https://www.youtube.com/user/JillWisemanDesigns>.

Please Note:

By purchasing this pattern, you agree to the following Jill Wiseman Designs conditions:

1. You may sell any work made from the pattern if you yourself hand-created the piece (in other words, no mass production). It would be nice if you credited the designer as well.
2. You may use any of our **free** YouTube projects, including this pattern, to teach a class. A list of free YouTube patterns which may be taught can be found on our website, www.jillwisemandesigns.com.